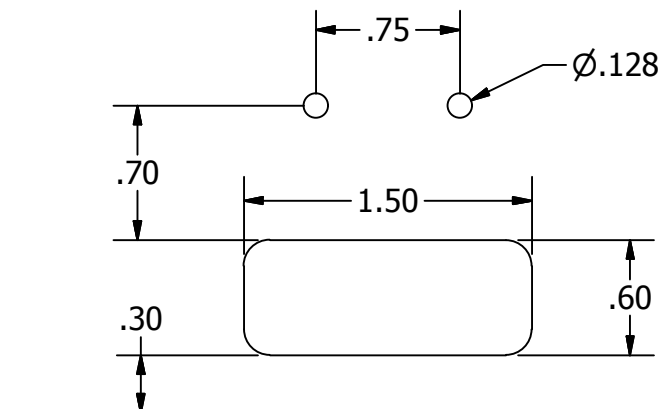
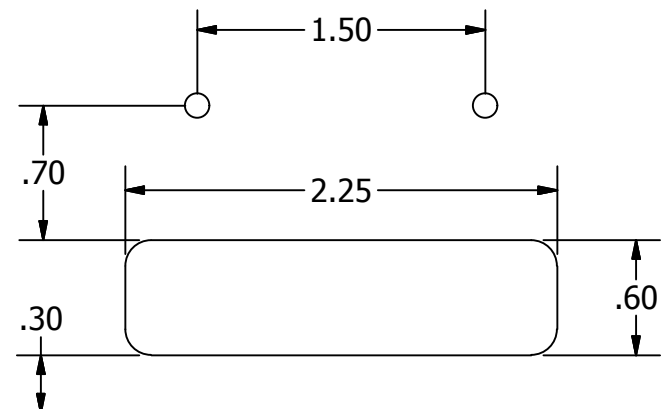


Trap-Door Mounting Diagram

**EMR-201
1.75" Trap-Door**



**EMR-200
2.50" Trap-Door**



Oil sump floor

Note: Allow for 1.0" of swing-out clearance in front of trap-doors

IMPROVED
RACING

Copyright (C) 2013 Improved Racing Products, LLC

Material:

Date: 10/1/2013

Units: U.S. Imperial Inch (in)

Scale:

Part #:

EMR-200_Mounting_Diagram

Tolerance unless
otherwise noted:

0.1: +/- 0.1

0.12: +/- 0.01

0.123: +/- 0.005