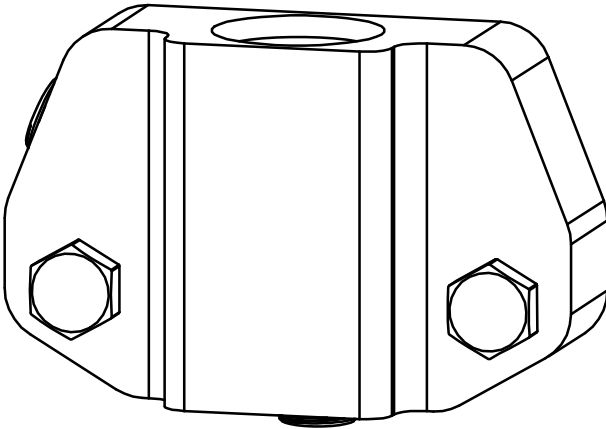




**Oiling Accessory Adapter
for GM LS & Vortec Series Engines**

Part No. EGM-116

Made in USA



**Important: Read these instructions
in their entirety prior to installation.**

For contact information, visit www.improvedracing.com

Copyright © 2008-2016 Improved Racing Products, LLC. All rights reserved.

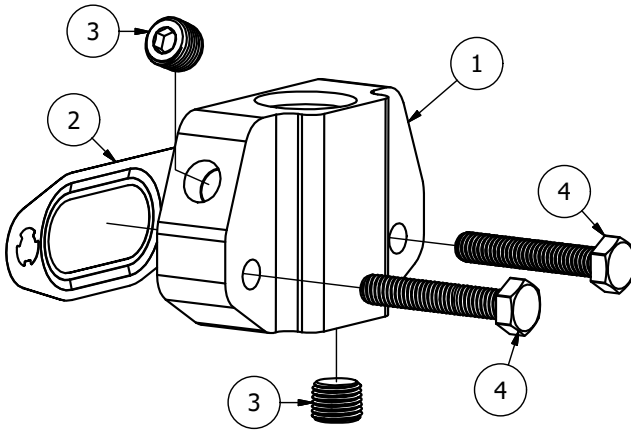
Rev 161202

Applications

- 1997+ GM LS and Vortec (GEN III/IV) Series V8 engines with rear-sump or front-sump oil pans with factory oil bypass covers

Included Parts List

ITEM	QUANTITY	PART #	DESCRIPTION
1	1	EGM-116	LS Oiling Accessory Adapter
2	1	12611384	Bypass Cover Gasket
3	2	PP-02	Pre-Sealed 1/8" NPT Plug
4	2	HSC-1020	M6 Cap Screws, 35mm Length



Optional Parts List

Improved Racing offers a variety of fittings that allow this adapter to be used with several oiling system accessories such as oil accumulators, oil supply lines for turbochargers and additional sensors. Optional fittings and their suggested uses are detailed below.

FITTING PART #	DESCRIPTION	USES
OM-08-08	-8AN Female to -8AN Flare	Oil Accumulators, Turbocharger Oil Supply
OM-08-10	-8AN Female to -10AN Flare	
OM-08-12	-8AN Female to -12AN Flare	
OP-08-02*	-8AN Female to 1/8" Female NPT	1/8" NPT Sensors
OF-08-M12	-8AN Female to M12x1.5 Female	M12x1.50 Sensors

Installation Instructions

⚠ WARNING: This product should only be installed by a qualified mechanic. Improper installation could result in severe engine damage.

Preparing for Installation

1. Raise the front of the vehicle and support with approved automotive frame stands, lift or ramps.

⚠ WARNING: NEVER work under a vehicle supported only by a jack.

2. Remove any underbody panels necessary to access the oil pan and filter.

3. Remove the oil filter.

⚠ Caution: Oil may be hot!

4. Remove the two bypass cover flange nuts and/or screws with a 10 mm socket or wrench. Be sure to remove the factory gasket shown in Figure 1.

💡 Important: Save and reuse the two flange nuts on *factory front sump oil pans*.

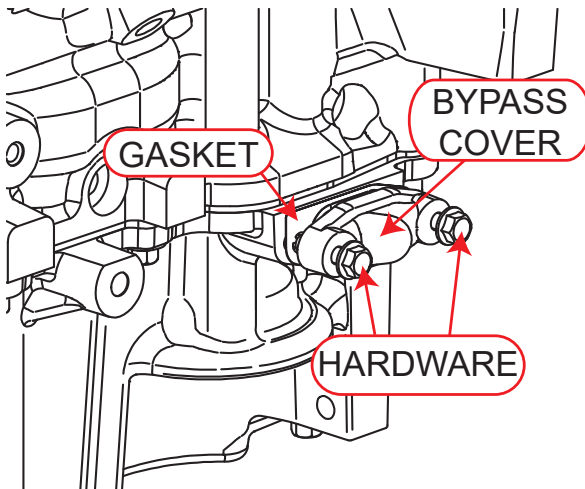


Figure 1 - Removing the factory bypass cover and hardware

5. Install optional fittings and sensors or accessories as desired. If installing sensors, Figure 2 shows maximum sensor lengths for each port.

💡 Important: Make sure the oil sensor does not bottom out in the adapter, as this may damage the adapter and/or sensor or cause a leak.



Tip: Lubricate the -AN fitting O-rings with motor oil to prevent O-ring damage.

Sensor length not to exceed 1.00" if using ports #1 and #2 simultaneously.

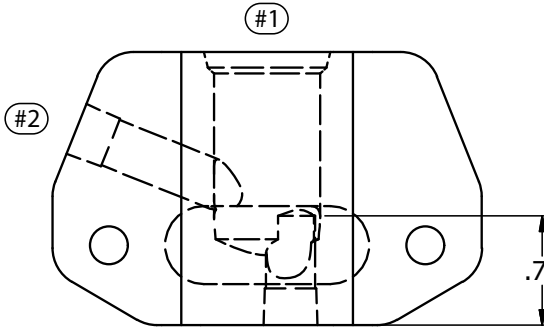


Figure 2 - 1/8" Female NPT Port Depths



Tip: Don't forget to use Teflon tape with 1/8" NPT sensors!

6. Install the provided pre-sealed NPT plugs into any unused 1/8" NPT ports. **DO NOT** overtighten.

Installing the Adapter

1. Install the adapter and new gasket onto the oil pan using the provided M6 cap screws, or the flange nuts removed during Step 4 in the *Preparing for Installation* Section. Torque screws to a maximum of 10 lb-ft (13.5 N·m).
2. Finish connecting all oiling system accessories and ensure that sensor wiring is protected from radiant heat.

Completing the Install

1. Replace the engine oil filter.
2. Perform the recommended priming procedure if using an oiling accessory such as an oil accumulator.
3. Check the engine oil level and add oil if needed.
4. Start the engine and inspect for leaks.
5. Reinstall any underbody panels and lower the vehicle back onto the ground.

Congratulations! Installation is now complete.