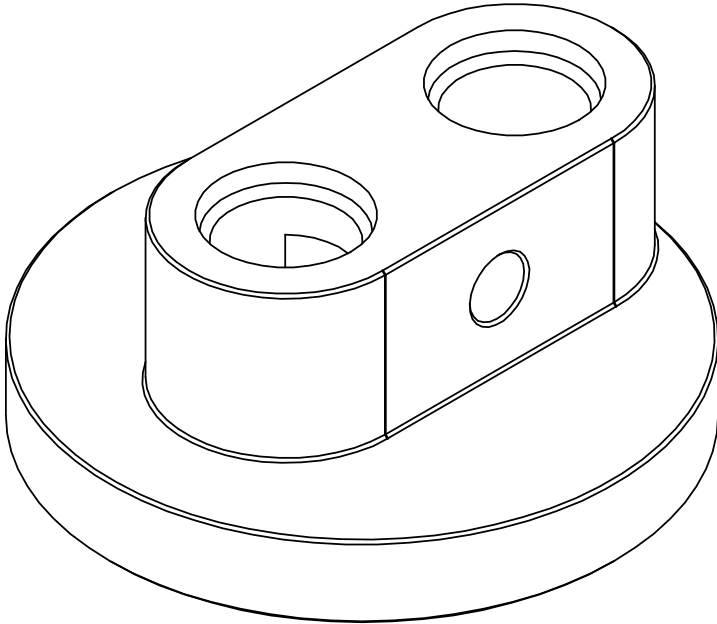




Multi-Platform Spin-On Remote Oil Filter Adapter

Made in USA

**Part No. ENV-160, ENV-161, ENV-162,
ENV-163**



**Important: Read these instructions
in their entirety prior to installation.**

For contact information, visit www.improvedracing.com

Copyright © 2008-2016 Improved Racing Products, LLC. All rights reserved.
Rev 160728


Technical Specifications


Plating	MIL-A-8625 Type II Anodized
Fitting Ports	2 x -08AN SAE J1926 / MS16142 O-Ring Boss
Material	CNC-Milled Billet 6061-T6 Aluminum
O-ring	2.609" ID, 231 Dash Size, 75 Durometer, Viton
Sensor Ports	2 x 1/8" NPT
Weight	6.0 ounces (170 grams)

Applications

Part Number	Oil Filter Thread
ENV-160	3/4"-16
ENV-161	M20x1.5
ENV-162	13/16"-16
ENV-163	M22x1.5

Installation Instructions

 **WARNING:** This product should ONLY be installed by a qualified mechanic. Improper installation could result in severe engine damage.


 **WARNING:** This product should ONLY be used in conjunction with a remote oil filter system. NEVER run an engine without proper oil filtration in place.

1. Drain the engine oil and remove the oil filter.

 **Caution:** Oil may be hot!

2. Ensure the provided O-ring is properly seated in the gland of the oil filter adapter prior to installation.





3. Screw-on the oil filter adapter by hand until snug.

 **Tip:** Lubricate the O-ring with motor oil to facilitate installation and ensure that the O-ring does not pinch or bind.

4. If not installing a sensor, install the provided pre-sealed NPT plugs using a 3/16" hex bit or key. DO NOT over-tighten.

a. If installing a sensor, follow the instructions provided with sensor.
Don't forget to use Teflon tape and/or thread sealant!

5. Install the provided aluminum fittings using aluminum AN fitting wrenches.

-  **WARNING:** Steel wrenches can easily damage aluminum fittings!
-  **Tip:** Lubricate the AN fitting O-rings with motor oil to facilitate installation and ensure that the O-ring does not pinch or bind.
6. Connect the oiling system lines to the corresponding IN and OUT ports on the adapter.
-  **WARNING:** Ensure that the oil entering the IN port is filtered oil only!
7. Perform a final inspection to ensure all AN fittings and lines are properly tightened.
8. Prime the oiling system before starting the engine.
-  **Tip:** Remove the fuel pump fuse and crank the engine over to build oil pressure.
9. Start the engine and inspect for leaks.
10. Shut-off the engine, replace the fuel pump fuse and top-off the engine oil level if needed.

Congratulations! You have successfully installed your remote oil filter take-off plate.